



Hillcrest

Plympton, Devon

A superb collection of 3 bedroom shared ownership homes




Welcome to **Hillcrest**

Hillcrest is a fantastic development, originally built in the 1970's, the former Ministry of Defence (MOD) estate will include 20 homes for shared ownership purchase.

Plympton is a suburb in the city of Plymouth, Britain's Ocean City in Devon steeped in history and situated with commuting distance between Cornwall and Devon. There is lots do in Plympton to suit all interests, including local heritage sites and attractions. For

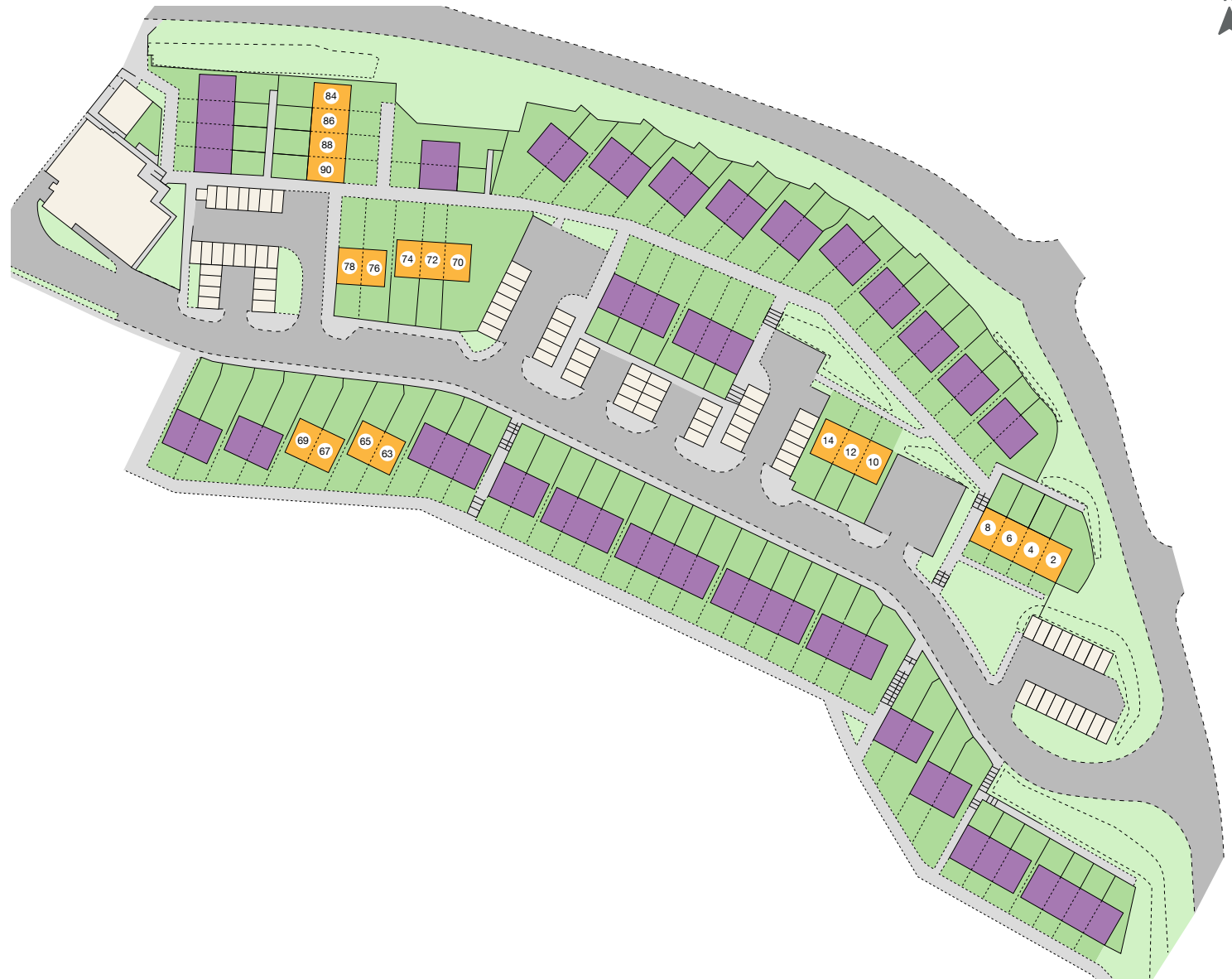
those looking to shop local, The Ridgeway shopping centre is within walking distance of Hillcrest, and offers shops, restaurants, cafés, and local supermarkets. Plympton also benefits from several primary schools and two secondary school, making it a perfect place for families.

Site plan

 **The Celestial**
3 Bedroom home

2, 4, 6, 8, 10, 12, 14, 63, 65,
67, 69, 70, 72, 74, 76, 78,
84, 86, 88 and 90

 **Rented**

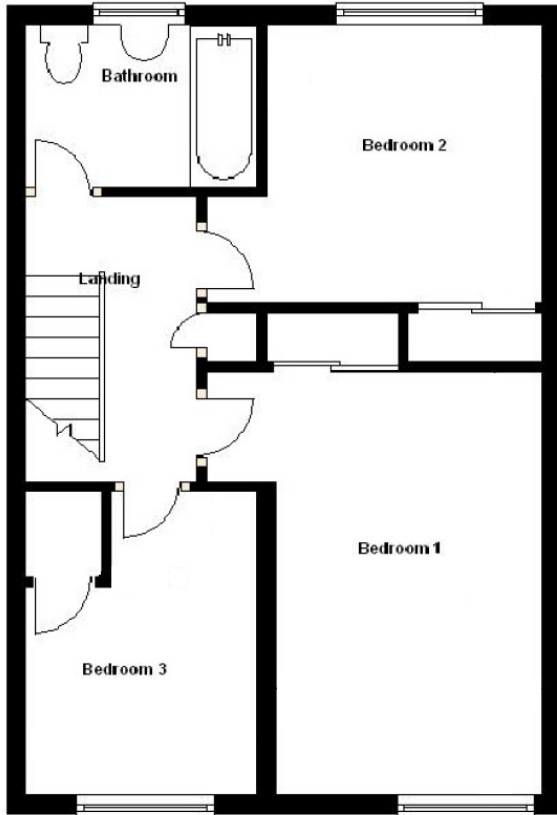


Disclaimer: Development layouts and landscaping are not intended to form part of any contract or warranty unless specifically incorporated in writing into the contract. Images and development layouts are for illustration purposes and should be used for general guidance only. Development layouts including parking arrangements, private/social/affordable housing, play areas and public open spaces may change and are not intended to form part of any contract or warranty unless specifically incorporated in writing. Please speak to your Solicitor to whom full details of any planning consents including layout plans will be available. Bellwood View is a marketing name only and may not be the designated postal address.

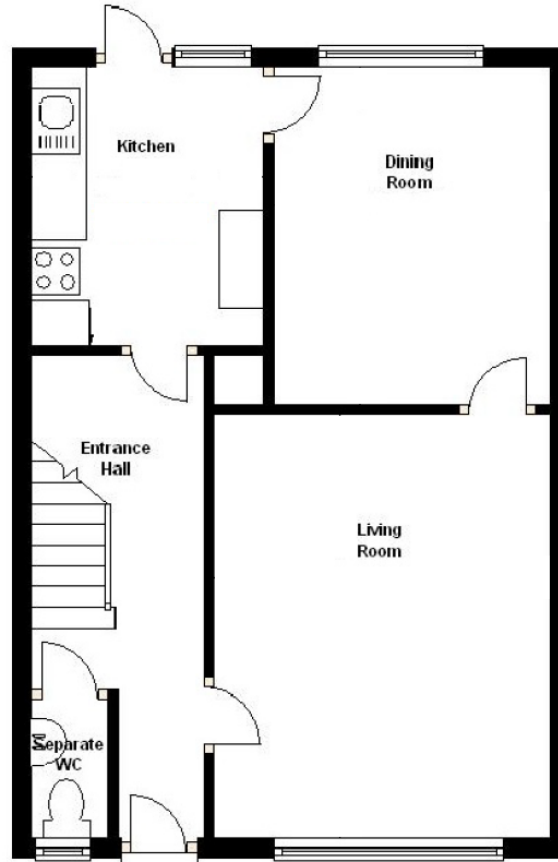
The Celestial

3 Bedroom home

Semi detached 63, 67, 78 (AS) 65, 69, 76 (OPP) • Mid Terrace 6, 12, 72, 88 (AS) 4, 86 (OPP)
End Terrace 2, 84 (AS) 8, 10, 14, 70, 74, 90 (OPP)



Ground floor



First floor

Ground floor

Lounge

4.44 x 3.53 m

Kitchen

2.91 x 2.42 m

Dining Room

3.52 x 2.90m

First floor

Bedroom 1

4.44 x 2.79m

Bedroom 2

2.91 x 2.89m

Bedroom 3

3.18 x 2.52m

Bathroom

2.21 x 1.67 m

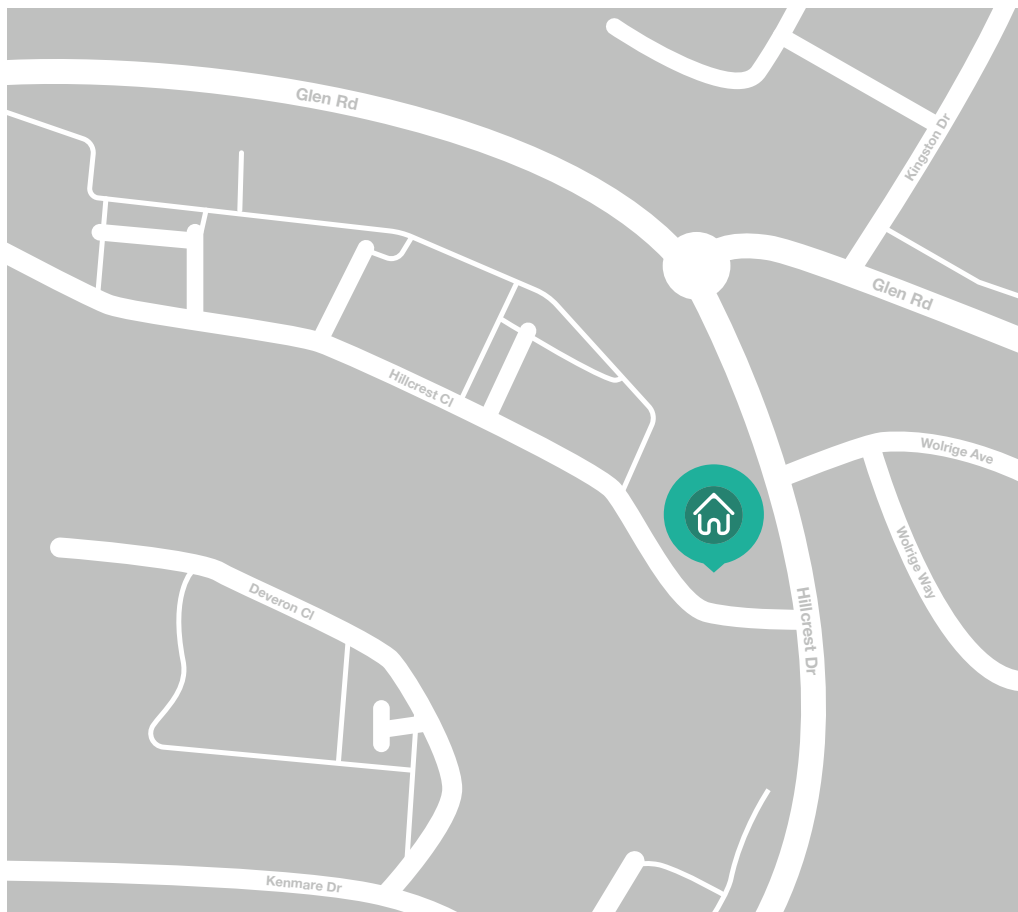
Total floor area 90m²

(Approximate dimensions)

*Window may be omitted on certain plots. Speak to sales officer for details.

Abbreviations: AS - As shown on floor plan / OPP - opposite hand to floor plan. All images used are for illustration purposes.

Disclaimer: These and the dimensions given for this house type and individual properties may differ. Please check with your sales officer in respect of individual properties. We give maximum dimensions within each room which includes areas of fixtures and fittings. These dimensions should not be used for carpet or flooring sizes, appliances spaces or items of furniture. All images, photographs are not intended to be relied upon to form part of, any contract unless specifically incorporated in writing into the contract.



How to find **Hillcrest**

Hillcrest Close,
Plympton,
Plymouth,
PL7 2ET

SO Living. Plumer House,
Crownhill, PL6 5DH

Opening times

Monday - Thursday 9am - 5pm
Friday - 9am - 4:30pm

 [so-living.co.uk](https://www.so-living.co.uk)

 0800 0778 748

 so-living@pch.co.uk

 [facebook.com/solvingplym](https://www.facebook.com/solvingplym)

 twitter.co.uk/solvingplym

SO Living is part of Plymouth's largest affordable housing provider, Plymouth Community Homes.

For full terms and conditions, visit the SO Living website. Information correct at November 2023

