



Peregrine Park

Exeter, Devon

A superb collection of 3 and 4 bedroom shared ownership homes



Welcome to **Peregrine Park**





Peregrine Park is an exciting new development of three and four bedroom homes in Exeter, available for shared ownership.

Ideally located just down the river from the picturesque city of Exeter, Peregrine Park provides easy access to the many attractions that it offers. Exeter is an Ancient city that dates to the roman era with a diverse mix of eateries, top

sporting events and music. The West Quarter also offers a variety of independent shops and boutiques, cafes and bars. Peregrine Park is also just a short drive away from the M5 and A30, offering brilliant transport access.

A further phase of homes will also be released at a later date, providing even more opportunities to join this thriving new community.

Site plan

-  **Sunflower**
3 Bedroom home
Plots 128
-  **Aspen**
4 Bedroom home
Plots 459
-  **Chestnut**
4 Bedroom home
Plots 401, 409, 424
-  **Other Properties**



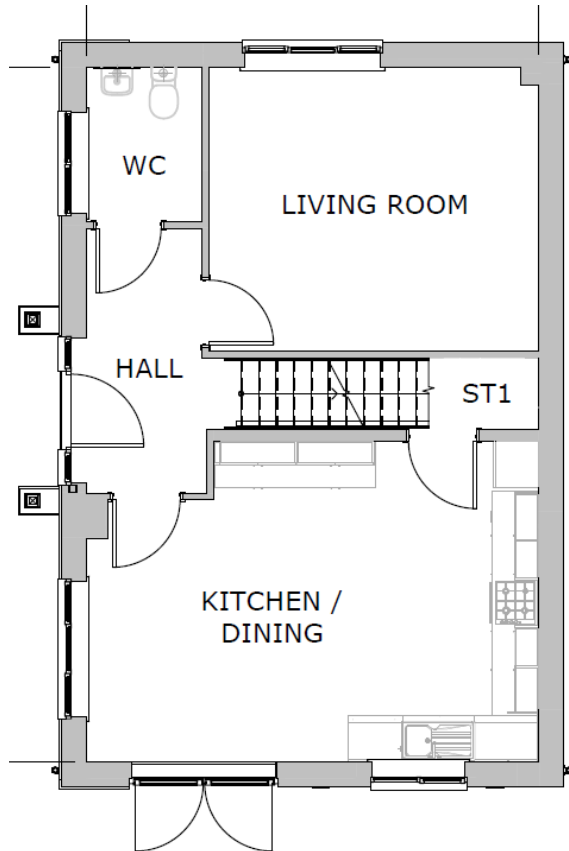
Disclaimer: Development layouts and landscaping are not intended to form part of any contract or warranty. Images and development layouts are for illustration purposes only, may not be to scale and should not be relied upon. Development layouts including parking arrangements, private/social/affordable housing, play areas and public open spaces may change and are not intended to form part of any contract or warranty unless specifically incorporated in writing. Filham Chase is a marketing name only and may not be the designated postal address. Please see the end of this document for further disclaimers



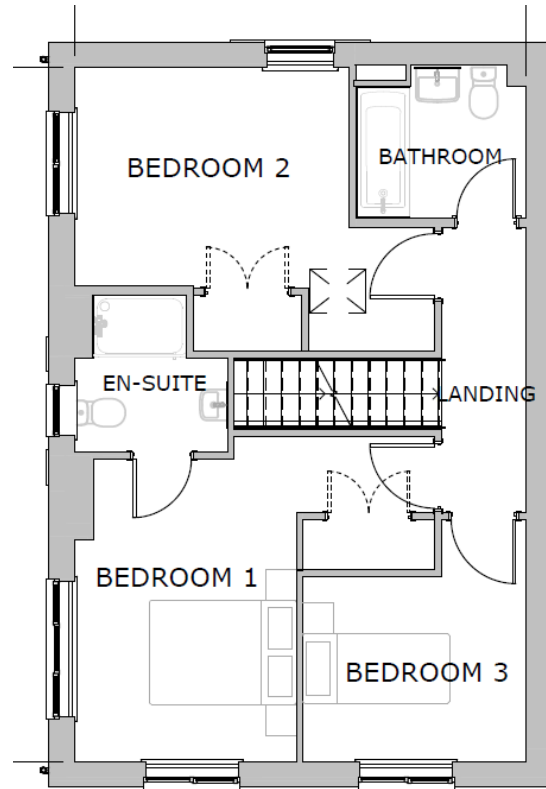
Disclaimer: Images may be computer-generated and are for illustrative purposes only, so may not be representative of exact plots or the building. This includes differences in colours, building materials, windows, doors, brick, carpet, paint, driveways, roads, plants, greenery, fencing, doors and guttering. Homes may be detached, semi-detached or mid terrace, please speak to a sales advisor for further information. Please see the end of this document for further disclaimers

3 Bedroom home

Detached plot 128 (OPP)



Ground floor



First floor

Disclaimer: Please check with your sales officer in respect of individual properties. These and the dimensions given for this house type and individual properties may differ. Floor plans and images are not to scale and are indicative only. These dimension should not be used for carpet or flooring sizes, appliances spaces or items of furniture. Total area figures that are given refer to the gross figures for internal areas and will vary from property to property. All images, photographs are not intended to be relied upon to form part of, any contract unless specifically incorporated in writing into the contract. The layout of bathrooms and kitchens may change. Location of windows, doors, kitchen units and appliances may differ. Window may be omitted on certain plots. Doors may swing in the opposite direction to that shown on selected houses. Please note, some plots may be handed (which means that the layout may be a mirror image of the plan shown above), please speak to a sales officer for further information. Please see the end of this document for further disclaimers.

Ground floor

Kitchen / Dining

5.85m x 4.16m

Living Room

4.26m x 3.67m

First floor

Bedroom 1

3.93m x 2.87m

Bedroom 2

3.56m x 2.83m

Bedroom 3

2.89m x 2.41m

Bathroom

2.20m x 1.97m

Total floor area 105.5m²

(Approximate dimensions)

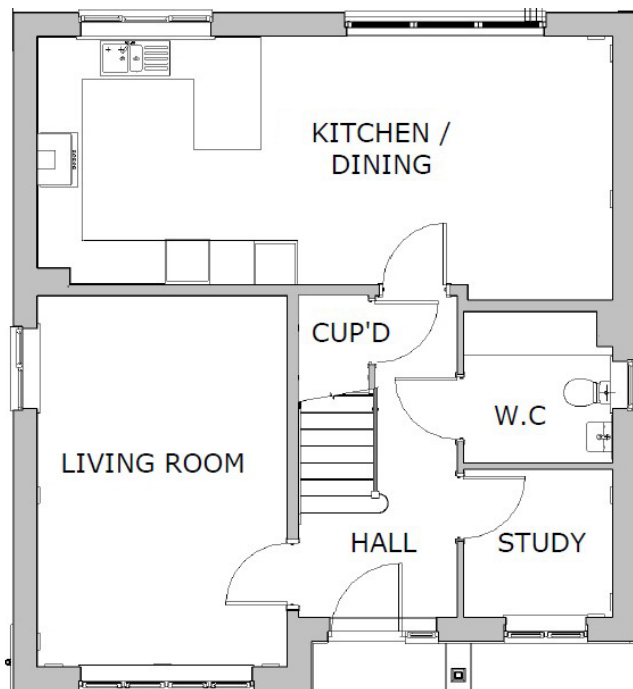
This property will be built to M4(2) standards. It is designed to be accessible and adaptable.



Disclaimer: Images may be computer-generated and are for illustrative purposes only, so may not be representative of exact plots or the building. This includes differences in colours, building materials, windows, doors, brick, carpet, paint, driveways, roads, plants, greenery, fencing, doors and guttering. Homes may be detached, semi-detached or mid terrace, please speak to a sales advisor for further information. Please see the end of this document for further disclaimers

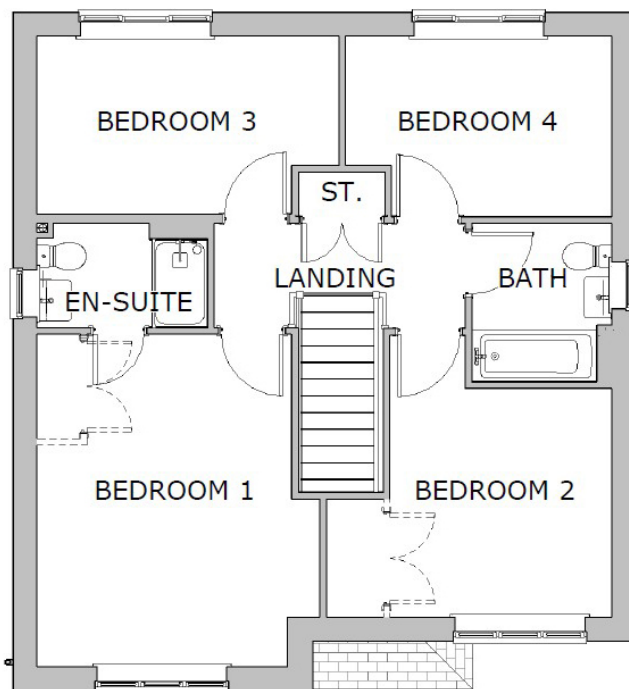
4 Bedroom home

Detached plot 459 (AS)



Ground floor

Disclaimer: Please check with your sales officer in respect of individual properties. These and the dimensions given for this house type and individual properties may differ. Floor plans and images are not to scale and are indicative only. These dimension should not be used for carpet or flooring sizes, appliances spaces or items of furniture. Total area figures that are given refer to the gross figures for internal areas and will vary from property to property. All images, photographs are not intended to be relied upon to form part of, any contract unless specifically incorporated in writing into the contract. The layout of bathrooms and kitchens may change. Location of windows, doors, kitchen units and appliances may differ. Window may be omitted on certain plots. Doors may swing in the opposite direction to that shown on selected houses. Please note, some plots may be handed (which means that the layout may be a mirror image of the plan shown above), please speak to a sales officer for further information. Please see the end of this document for further disclaimers.



First floor

Ground floor

Kitchen / Dining

7.77m x 3.58m

Living Room

5.04m x 3.39m

Study

2.02m x 2.01m

First floor

Bedroom 1

4.52m x 3.81m

Bedroom 2

3.87m x 3.11m

Bedroom 3

4.07m x 2.42m

Bedroom 4

3.61m x 2.45m

Bathroom

2.15m x 1.9m

Total floor area 127.3m²

(Approximate dimensions)

This property will be built to M4(2) standards. It is designed to be accessible and adaptable.



Disclaimer: Images may be computer-generated and are for illustrative purposes only, so may not be representative of exact plots or the building. This includes differences in colours, building materials, windows, doors, brick, carpet, paint, driveways, roads, plants, greenery, fencing, doors and guttering. Homes may be detached, semi-detached or mid terrace, please speak to a sales advisor for further information. Please see the end of this document for further disclaimers

4 Bedroom home

Detached plot 401, 409 (AS), 459 (OPP)



Ground floor

First floor

Disclaimer: Please check with your sales officer in respect of individual properties. These and the dimensions given for this house type and individual properties may differ. Floor plans and images are not to scale and are indicative only. These dimension should not be used for carpet or flooring sizes, appliances spaces or items of furniture. Total area figures that are given refer to the gross figures for internal areas and will vary from property to property. All images, photographs are not intended to be relied upon to form part of, any contract unless specifically incorporated in writing into the contract. The layout of bathrooms and kitchens may change. Location of windows, doors, kitchen units and appliances may differ. Window may be omitted on certain plots. Doors may swing in the opposite direction to that shown on selected houses. Please note, some plots may be handed (which means that the layout may be a mirror image of the plan shown above), please speak to a sales officer for further information. Please see the end of this document for further disclaimers.

Ground floor

Kitchen area

4.04m x 3.04m

Dining area

4.59m x 2.83m

Living Room

5.02m x 3.4m

First floor

Bedroom 1

4.47m x 3.24m

Bedroom 2

3.43m x 3.38m

Bedroom 3

3.4m x 2.31m

Bedroom 4

3.20m x 2.35m

Bathroom

2.31m x 1.9m

Total floor area 128.3m²

(Approximate dimensions)

How to find

Peregrine Park

Chudleigh Road,
Exeter,
EX2 9SQ

Get in touch

SO Living. Plumer House,
Crownhill, PL6 5DH

Opening times

Monday - Thursday 9am - 5pm
Friday - 9am - 4:30pm



so-living.co.uk



0800 0778 748



so-living@pch.co.uk



facebook.com/solvingplym



x.com/solvingplym

SO Living is part of Plymouth's largest affordable housing provider, Plymouth Community Homes.



Disclaimer: We take reasonable care when preparing the content on our website or advertising materials to ensure accuracy. All information on our website or within advertising content is subject to change and we do not warrant or guarantee its accuracy. The information on our website and within advertising content is for guidance only and is subject to change. It is not intended to form part of any contract or warranty. Plymouth Community Homes has a policy of continuous improvement and reserves the right to change specification details, designs, floor plans and site plans at any time. CGI may depict a typical future street scene of the development once completed. While particulars are prepared in good faith, no responsibility is accepted as to their accuracy or for any other error, omission or misstatement made by Plymouth Community Homes staff in their employment or their agents whether during negotiation, in these particulars or otherwise.

Images may be computer-generated and are for illustrative purposes only, so may not be representative of exact plots or the building. This includes that the colours of the building may be different. Individual specifications may vary including that fittings and features may be different to those pictured. This includes differences in building materials, windows, doors, brick, carpet, paint, driveways, roads, plants, greenery, fencing, doors and guttering. Any furnishings are virtually staged and are not included in the sale of the property. Homes may be detached, semi-detached or mid terrace, please speak to a sales officer for further information. Homes may or may not have a garage or shed, please speak to a sales officer for further information. Floor plans and images are not to scale and are indicative only. The layout of bathrooms and kitchens may change. Location of windows, doors, kitchen units and appliances may differ. Doors may swing in the opposite direction to that shown on selected houses. Dimensions, which are taken from the indicated points of measurement, are for guidance only and are not intended to be used to calculate space for items of furniture, carpets or for flooring. Total area figures that are given refer to the gross figures for internal areas and will vary from property to property. Please note, some plots may be handed (which means that the layout may be a mirror image of the plan shown above), please speak to a sales officer for further information.

Photos are for guidance only and may not show properties accurately. Photos are representative of style and finish which may be available on the development. Please speak to a sales officer for further information. Furnishings are not included in any sale or let, but are for illustration only.

SO Living is a brand managed by Plymouth Community Homes Limited, a registered society under the Co-operative and Community Benefit Societies Act 2014, registered under 30637 R. VAT Registered No. 945 7600 05. Our registered office is Plumer House, Tallyour Road, Plymouth, PL6 5DH.

For full terms and conditions, visit the SO Living website. Information correct at September 2025