



# Palmerston Heights

Derriford, Plymouth

---

A superb collection of 2 and 3 bedroom shared ownership homes





Welcome to

# Palmerston Heights

---

Palmerston Heights is an exciting new selection of two and three bedroom homes located in the North of Plymouth, available to purchase through shared ownership.

Nestled in the well-established suburb of Derriford, the scheme has excellent transport links to Exeter and Cornwall via the A38, Devon's main road route. There are also local schools, Plymouth's main hospital and business parks in Derriford, providing great amenities nearby.

If you are looking to venture into the city, Plymouth is located less than 4 miles away and has something for everyone, including retail, cafes and the famous Plymouth Hoe and Barbican. The National Park of Dartmoor is also a short drive away from the scheme, providing a haven for cycling, walking or enjoying its rich history and rare wildlife.

Purchase your new shared ownership home in Palmerston Heights today with SO Living.

# Site plan

**Peacock**  
2 Bedroom home  
Plots 11,12, 14

**Kingfisher**  
3 Bedroom home  
Plots 13, 15

**Rented**

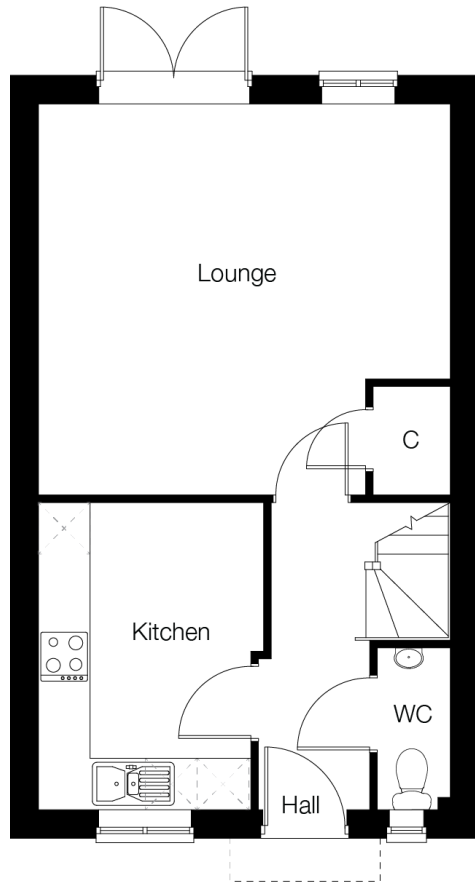
**Open Market**



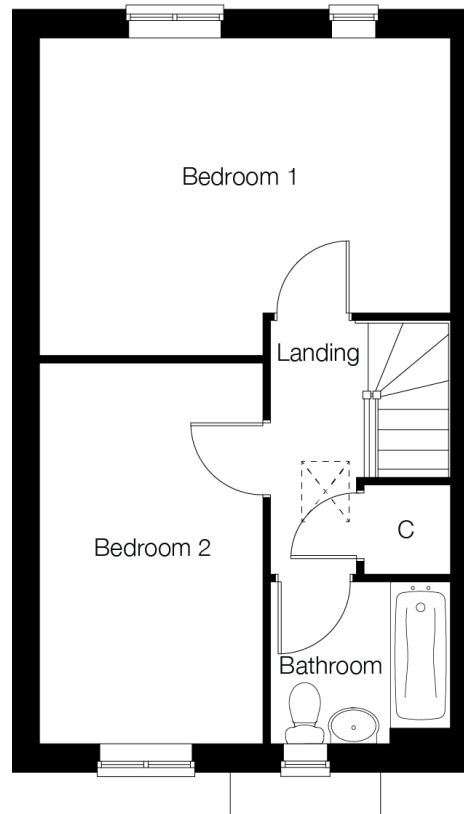
**Disclaimer:** Development layouts and landscaping are not intended to form part of any contract or warranty unless specifically incorporated in writing into the contract. Images and development layouts are for illustration purposes and should be used for general guidance only. Development layouts including parking arrangements, private/social/affordable housing, play areas and public open spaces may change and are not intended to form part of any contract or warranty unless specifically incorporated in writing. Parking layout is not as illustrated and still subject change. Please speak to your Solicitor to whom full details of any planning consents including layout plans will be available. Palmerston Heights is a marketing name only and may not be the designated postal address.

## 2 Bedroom home

Semi detached plots 12 (AS), 11 (OPP)  
Mid terraced plot 14 (AS)



Ground floor



First floor

### Ground floor

#### Lounge

4.78 x 4.53m

#### Kitchen

3.55 x 2.60m

### First floor

#### Bedroom 1

4.78 x 3.59m

#### Bedroom 2

4.52 x 2.54m

#### Bathroom

2.11 x 1.88m

Total floor area 80m<sup>2</sup>

(Approximate dimensions)

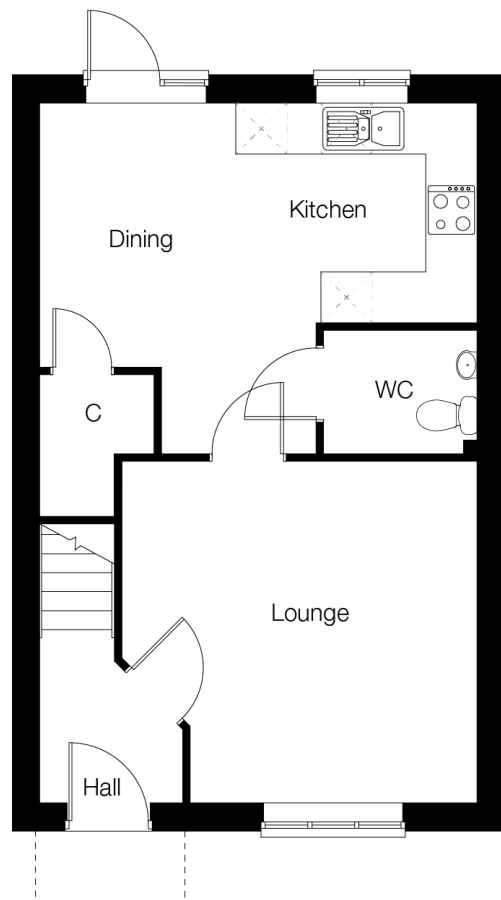
\*Window may be omitted on certain plots. Speak to sales officer for details.

Abbreviations: AS - As shown on floor plan / OPP - opposite hand to floor plan. All images used are for illustration purposes.

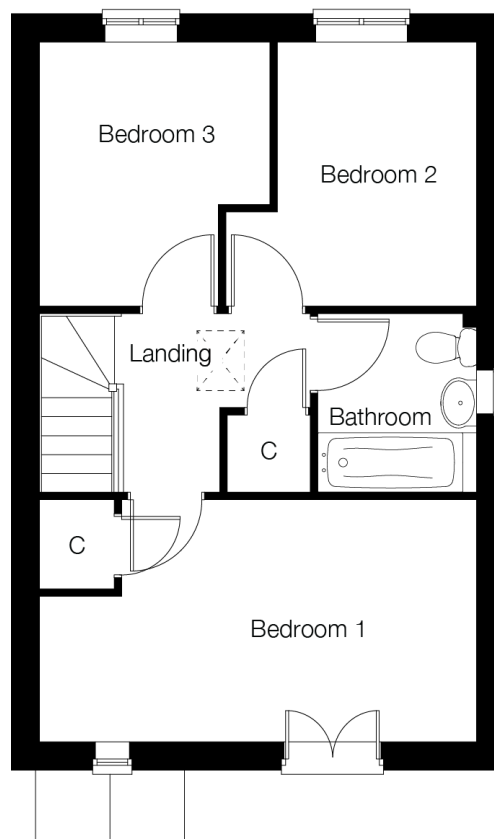
**Disclaimer:** These and the dimensions given for this house type and individual properties may differ. Please check with your sales officer in respect of individual properties. We give maximum dimensions within each room which includes areas of fixtures and fittings. These dimensions should not be used for carpet or flooring sizes, appliances spaces or items of furniture. All images, photographs are not intended to be relied upon to form part of, any contract unless specifically incorporated in writing into the contract.

## 3 Bedroom home

End terraced plots 13 (AS), 15 (OPP)



Ground floor



First floor

### Ground floor

#### Lounge

4.14 x 3.98m

#### Kitchen/ dining

5.04 x 4.13m

### First floor

#### Bedroom 1

5.10 x 2.82m

#### Bedroom 2

3.11 x 2.95m

#### Bedroom 3

3.10 x 2.73m

#### Bathroom

2.09 x 1.85m

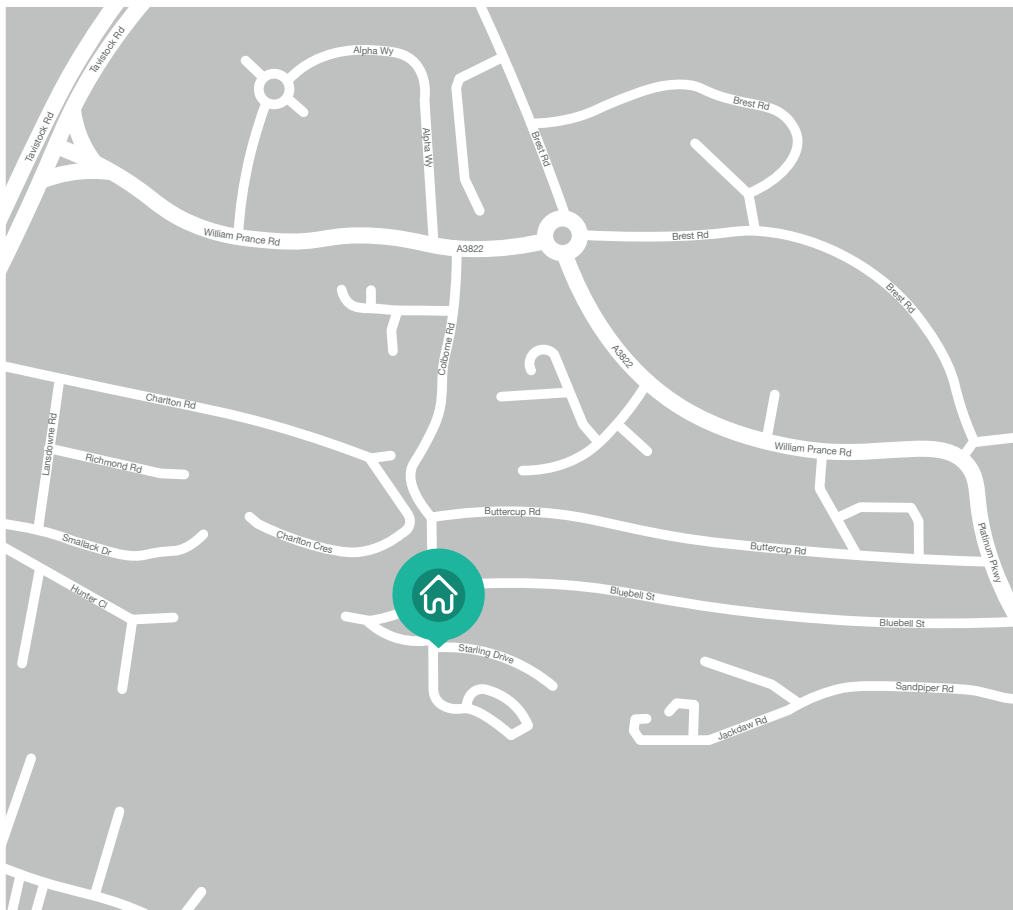
Total floor area 86m<sup>2</sup>

(Approximate dimensions)

\*Window may be omitted on certain plots. Speak to sales officer for details.

Abbreviations: AS - As shown on floor plan / OPP - opposite hand to floor plan. All images used are for illustration purposes.

**Disclaimer:** These and the dimensions given for this house type and individual properties may differ. Please check with your sales officer in respect of individual properties. We give maximum dimensions within each room which includes areas of fixtures and fittings. These dimensions should not be used for carpet or flooring sizes, appliances spaces or items of furniture. All images, photographs are not intended to be relied upon to form part of, any contract unless specifically incorporated in writing into the contract.



## How to find **Palmerston Heights**

Off Starling Drive,  
Derriford,  
Plymouth,  
PL6 8FY

SO Living. Plumer House,  
Crownhill, PL6 5DH

### **Opening times**

Monday - Thursday 9am - 5pm  
Friday - 9am - 4:30pm

 [so-living.co.uk](https://www.so-living.co.uk)

 0800 0778 748

 [so-living@pch.co.uk](mailto:so-living@pch.co.uk)

 [facebook.com/solivingplym](https://facebook.com/solivingplym)

 [x.com/solivingplym](https://x.com/solivingplym)

**SO Living is part of Plymouth's largest affordable housing provider, Plymouth Community Homes.**

For full terms and conditions, visit the SO Living website. Information correct at January 2025

