



# Seabrook Orchards

Exeter, Devon

---

A superb collection of 2 and 3 bedroom shared ownership homes



## Welcome to **Seabrook Orchards**

---

An exciting new collection of two and three bedroom homes for shared ownership purchase, situated in the highly sought-after residential area of Topsham.

The development of Seabrook Orchards will join the community of Topsham, South East of Exeter. It is perfect for first-time buyers, families, and anyone looking to comfortably downsize. The development has a primary school and nursery with further plans for a community centre; multiple play areas and green spaces.

The historic estuary town of Topsham is nestled along the River Exe, between Exeter and Exmouth. Once a thriving port, the maritime buildings and historic pubs remain at the heart of the town combined with having modern amenities such as award-winning restaurants, boutiques, museums and galleries.

Explore the surrounding areas of Exeter's thriving city centre; Exmouth's sandy beaches; the vast wildlife of the Green Marsh nature reserve; cruise the Exe estuary and shop locally at Dart's Farm.

# Site plan

**The Sansom**  
2 Bedroom home  
Plots 393, 394, 395, 409, 410

**The Sisson**  
3 Bedroom home  
Plots 415, 416, 417, 418

**Other Housing**

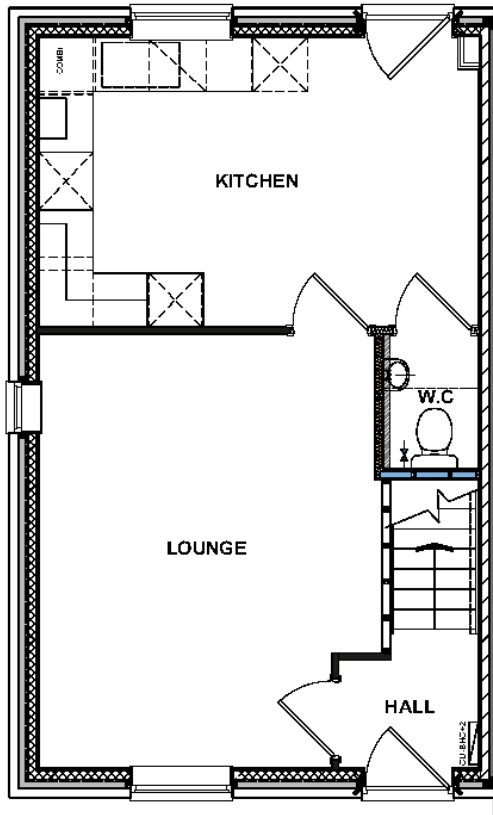


**Disclaimer:** Development layouts and landscaping are not intended to form part of any contract or warranty unless specifically incorporated in writing into the contract. Images and development layouts are for illustration purposes and should be used for general guidance only. Development layouts including parking arrangements, private/social/affordable housing, play areas and public open spaces may change and are not intended to form part of any contract or warranty unless specifically incorporated in writing. Please speak to your Solicitor to whom full details of any planning consents including layout plans will be available. Treledan is a marketing name only and may not be the designated postal address.

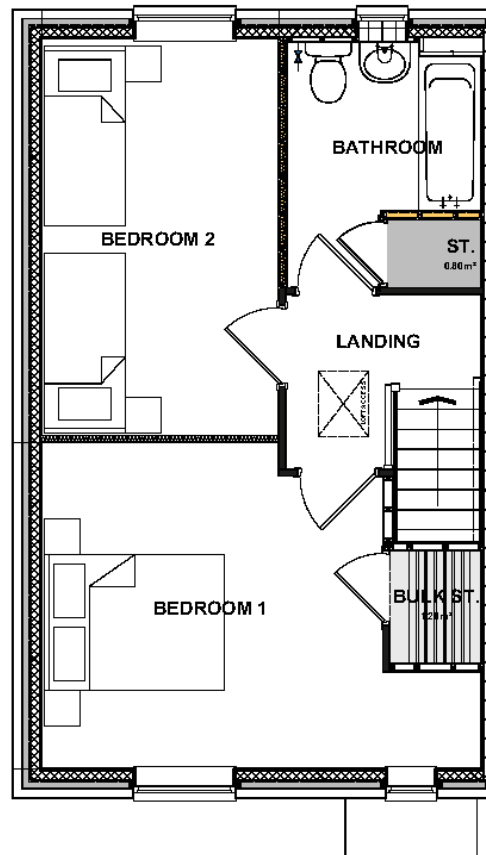
# The Sansom

## 2 Bedroom home

End terrace plots 395 (AS), 393, 409 (OPP)  
Mid terrace plots 394, 410 (AS)



Ground floor



First floor

**Disclaimer:** Please check with your sales officer in respect of individual properties. These and the dimensions given for this house type and individual properties may differ. Floor plans and images are not to scale and are indicative only. These dimension should not be used for carpet or flooring sizes, appliances spaces or items of furniture. Total area figures that are given refer to the gross figures for internal areas and will vary from property to property. All images, photographs are not intended to be relied upon to form part of, any contract unless specifically incorporated in writing into the contract. The layout of bathrooms and kitchens may change. Location of windows, doors, kitchen units and appliances may differ. Window may be omitted on certain plots. Doors may swing in the opposite direction to that shown on selected houses. Please note, some plots may be handed (which means that the layout may be a mirror image of the plan shown above), please speak to a sales officer for further information. Please see the end of this document for further disclaimers.

### Ground floor

#### Lounge

4.81m x 3.7m

#### Kitchen / Diner

4.87m x 3.21m

### First floor

#### Bedroom 1

4.87m x 3.62m

#### Bedroom 2

4.4m x 2.62m

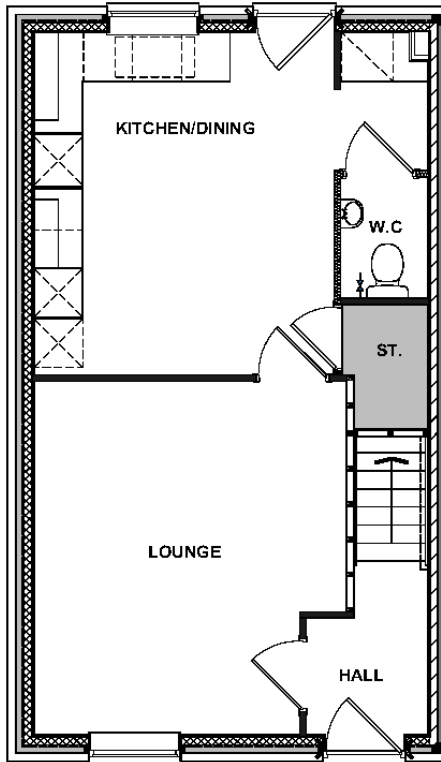
Total floor area 79m<sup>2</sup>

(Approximate dimensions)

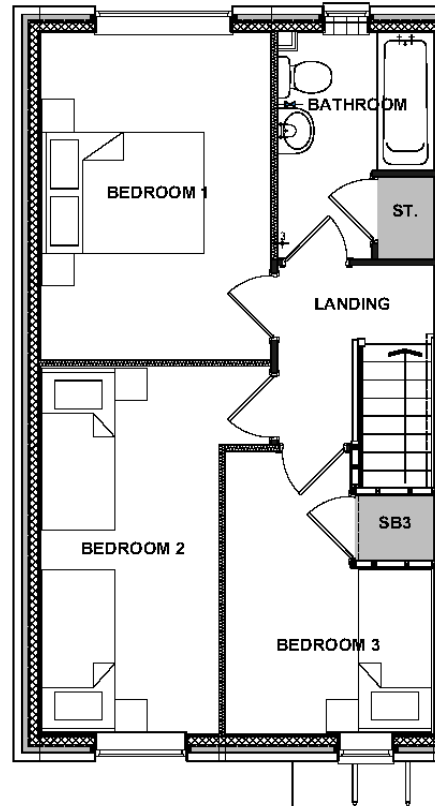
# The Sisson

## 3 Bedroom home

Semi detached plots 416, 418 (AS), 415, 417 (OPP)



Ground floor



First floor

**Disclaimer:** Please check with your sales officer in respect of individual properties. These and the dimensions given for this house type and individual properties may differ. Floor plans and images are not to scale and are indicative only. These dimension should not be used for carpet or flooring sizes, appliances spaces or items of furniture. Total area figures that are given refer to the gross figures for internal areas and will vary from property to property. All images, photographs are not intended to be relied upon to form part of, any contract unless specifically incorporated in writing into the contract. The layout of bathrooms and kitchens may change. Location of windows, doors, kitchen units and appliances may differ. Window may be omitted on certain plots. Doors may swing in the opposite direction to that shown on selected houses. Please note, some plots may be handed (which means that the layout may be a mirror image of the plan shown above), please speak to a sales officer for further information. Please see the end of this document for further disclaimers.

### Ground floor

#### Lounge

4.35m x 3.84m

#### Kitchen

4.22m x 3.7m

### First floor

#### Bedroom 1

4.04m x 2.84m

#### Bedroom 2

4.53m x 2.20m

#### Bedroom 3

3.49m x 2.57m

Total floor area 84m<sup>2</sup>

(Approximate dimensions)

How to find

# Seabrook Orchards

Dart Avenue,  
Exeter, EX2 7DR

## Get in touch

SO Living. Plumer House,  
Crownhill, PL6 5DH

### Opening times

Monday - Thursday 9am - 5pm  
Friday - 9am - 4:30pm

 [so-living.co.uk](https://www.so-living.co.uk)

 0800 0778 748

 [so-living@pch.co.uk](mailto:so-living@pch.co.uk)

 [facebook.com/solvingplym](https://www.facebook.com/solvingplym)

 [x.com/solvingplym](https://www.x.com/solvingplym)

**SO Living is part of Plymouth's largest affordable housing provider, Plymouth Community Homes.**



Disclaimer: We take reasonable care when preparing the content on our website or advertising materials to ensure accuracy. All information on our website or within advertising content is subject to change and we do not warrant or guarantee its accuracy. The information on our website and within advertising content is for guidance only and is subject to change. It is not intended to form part of any contract or warranty. Plymouth Community Homes has a policy of continuous improvement and reserves the right to change specification details, designs, floor plans and site plans at any time. CGI may depict a typical future street scene of the development once completed. While particulars are prepared in good faith, no responsibility is accepted as to their accuracy or for any other error, omission or misstatement made by Plymouth Community Homes staff in their employment or their agents whether during negotiation, in these particulars or otherwise.

Images may be computer-generated and are for illustrative purposes only, so may not be representative of exact plots or the building. This includes that the colours of the building may be different. Individual specifications may vary including that fittings and features may be different to those pictured. This includes differences in building materials, windows, doors, brick, carpet, paint, driveways, roads, plants, greenery, fencing, doors and guttering. Any furnishings are virtually staged and are not included in the sale of the property. Homes may be detached, semi-detached or mid terrace, please speak to a sales officer for further information. Homes may or may not have a garage or shed, please speak to a sales officer for further information. Floor plans and images are not to scale and are indicative only. The layout of bathrooms and kitchens may change. Location of windows, doors, kitchen units and appliances may differ. Doors may swing in the opposite direction to that shown on selected houses. Dimensions, which are taken from the indicated points of measurement, are for guidance only and are not intended to be used to calculate space for items of furniture, carpets or for flooring. Total area figures that are given refer to the gross figures for internal areas and will vary from property to property. Please note, some plots may be handed (which means that the layout may be a mirror image of the plan shown above), please speak to a sales officer for further information.

Photos are for guidance only and may not show properties accurately. Photos are representative of style and finish which may be available on the development. Please speak to a sales officer for further information. Furnishings are not included in any sale or let, but are for illustration only.

SO Living is a brand managed by Plymouth Community Homes Limited, a registered society under the Co-operative and Community Benefit Societies Act 2014, registered under 30637 R. VAT Registered No. 945 7600 05. Our registered office is Plumer House, Tailyour Road, Plymouth, PL6 5DH.

For full terms and conditions, visit the SO Living website. Information correct at April 2026